

Getting to Know Your Smart-box



PLASTEEL
A PLASTIC ENGINEERING COMPANY

Smart-box Includes:

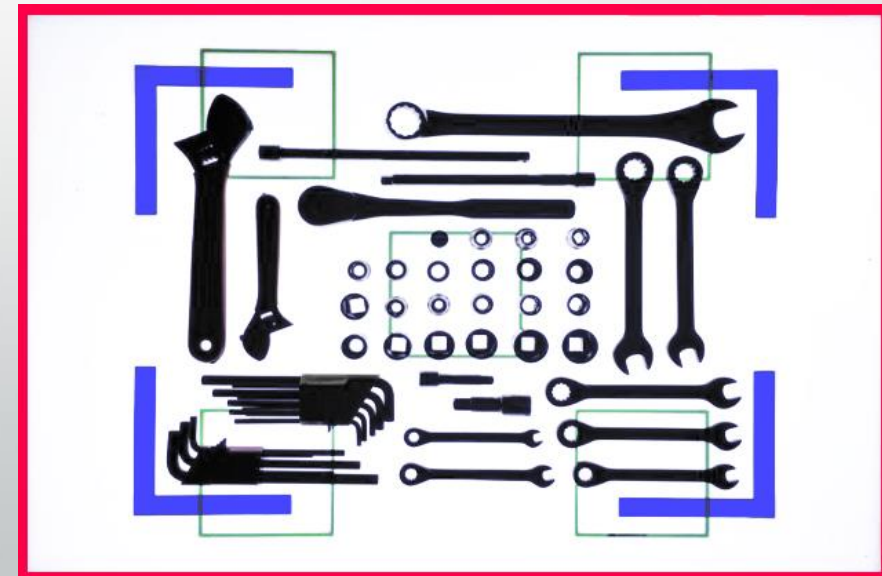
- 1 Power Cable
- 4 Corner Brackets
- 3 pc Canopy
- 1 Smart-box



Getting Started:



- Assemble canopy
- Plug in the Power Cord to the Lightbox and outlet, light will automatically turn on.
- Set camera settings: **High Resolution**, and flash set to **off**
- Place Corner Brackets as a reference for the size of the tool drawer/tray
- Space tools a minimum of 3/8" from each other and edge of tray
- Avoid placing tall/long tools around the edges of tray
- Trays with tools/parts taller than 3" should have a paper cutout in it's place
- Do NOT zoom in on camera
- **Red** border should be visible in images (if applicable)
- Final images should be greater than 1MB



Filling out the Engraving Log:



At the bottom of the Tool Tray log you will find an additional tab called Engraving Log. Click on that to open it up

- Under **Label Entry** list labels being used on all trays entered on TTL
- QTY enter total amount of each label being used on all trays

TOTAL: 8					
Label Entry	Qty				
8 mm Socket	1				
10mm Socket	1				
11mm Socket	1				
13mm Socket	1				
Wrench	4				

Navigation bar: Tool Tray Log | **Engraving Log** | [+] | [<] | [>]

Thank You for Purchasing Your Smart-box

www.gotfod.com FOD@plasteelaz.com 480-491-8100



PLASTEEL
A PLASTIC ENGINEERING COMPANY