



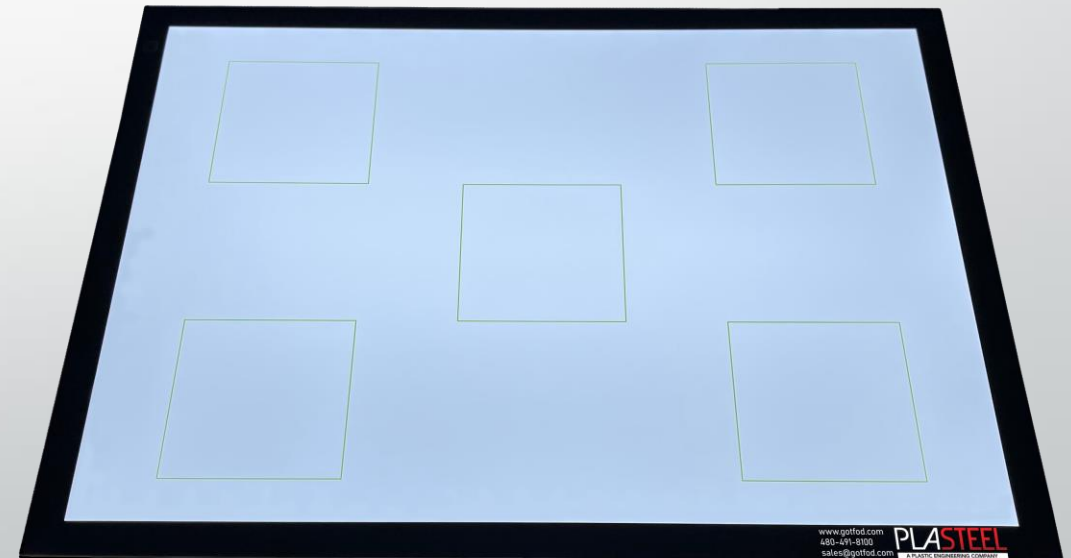


# Getting Started:



- Place your Shadowpad on a flat and level surface.
- Plug in the Power Cord to the Shadowpad and outlet, turn on by pressing the power button once.
- Set camera/phone settings: **High Resolution**, and flash **off**
- Place Corner Brackets as a reference for the size of the tool drawer/tray

**PLEASE NOTE: Final images should be greater than 1MB**

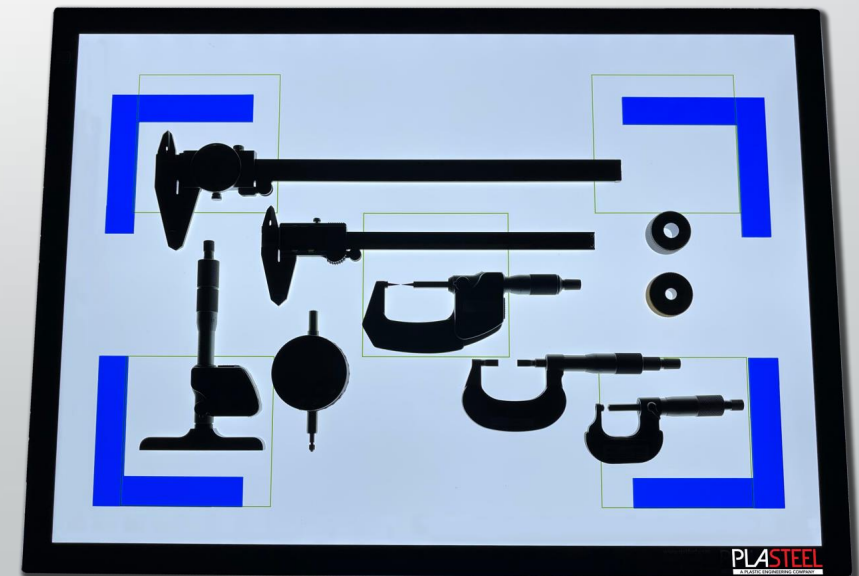


# Tips for Taking your pictures:



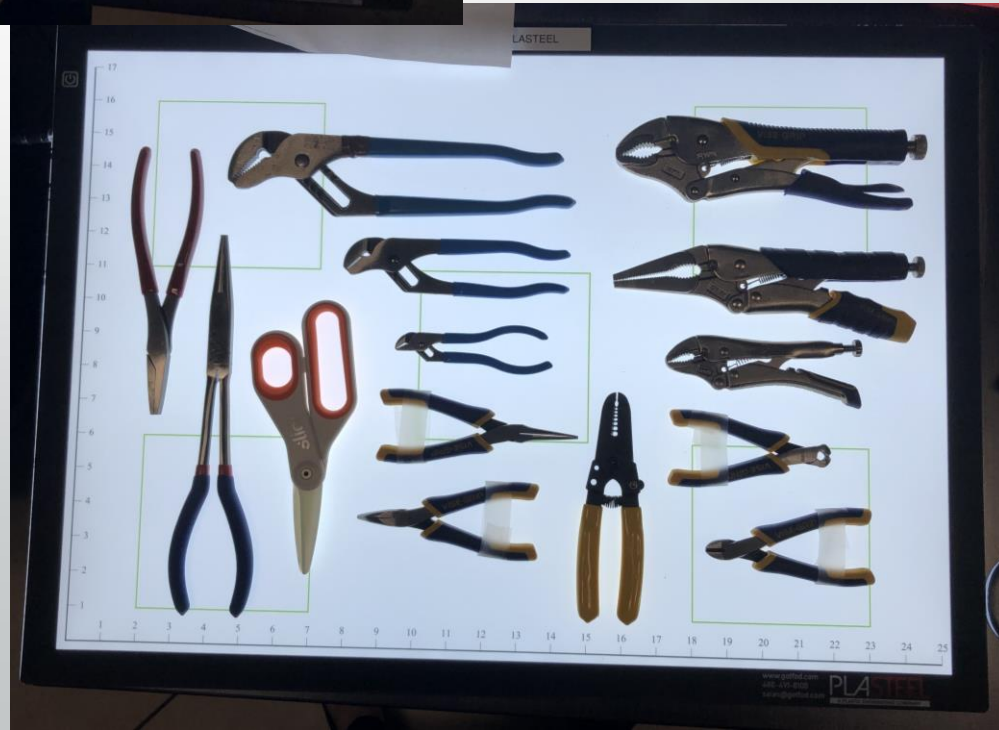
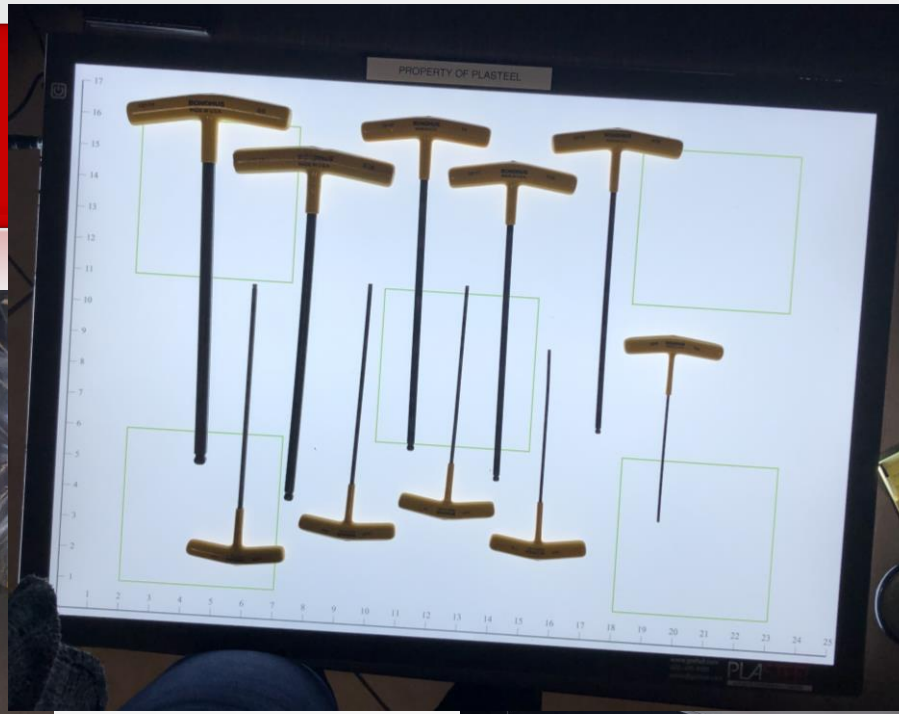
- **Space** tools a minimum of 3/8" from each other and edge of tray
- Center tools on the middle of the shadowpad
- Avoid placing tall/long tools around the edges of tray
- Trays with tools/parts taller than 3" – replace with paper cutout of shape
- Do NOT zoom in on camera, hold phone as flat as possible
- Take photo from a raised level – entire outside border of should be present in photo

**PLEASE NOTE: Final images should be greater than 1MB**





# Example Photos:

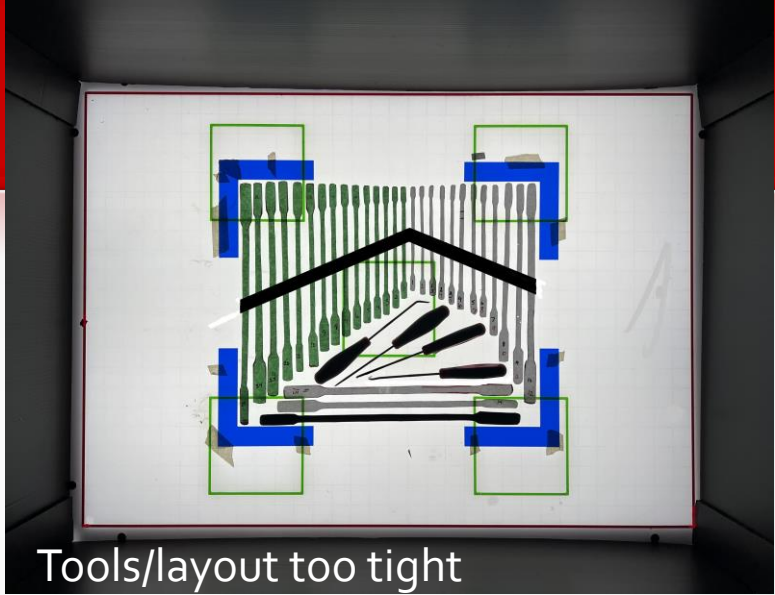


**PLEASE NOTE: Final images should be greater than 1MB**

# Unacceptable Photos:



Lightbox border not visible, perspective off



Tools/layout too tight

**PLEASE NOTE: Final images should be greater than 1MB**



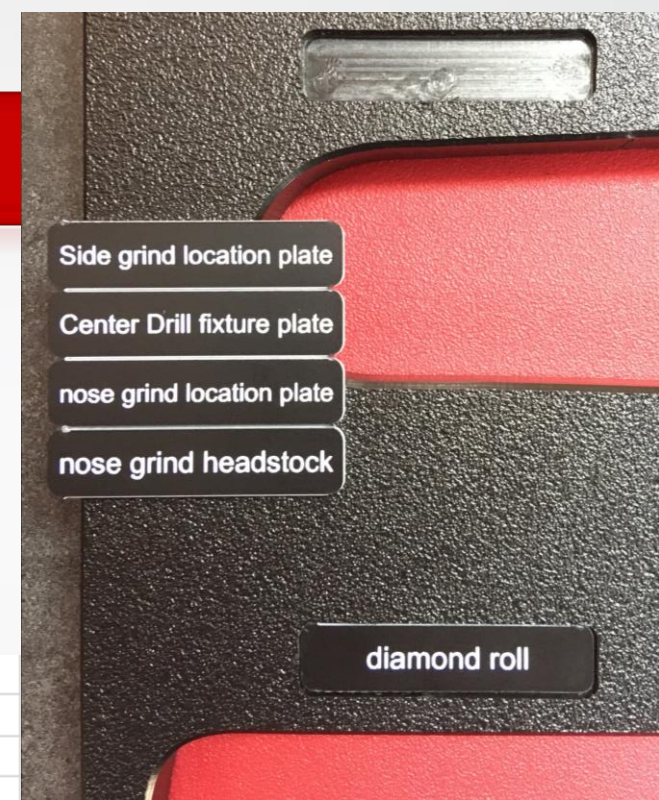
Lightbox not on





# Filling out the Engraving Log:

- Labels are OPTIONAL, placards sit flush in pockets next to each tool
- List labels under "Label Entry"
- QTY: enter **total** amount being used on **all** trays
- 20 Character limit per row, 2 rows max per label



**TOTAL: 7**

20 Characters MAX Per Row  
2 Rows MAX Per Label

If cell turns red, reduce characters or use Line 2

Line 1	Line 2	Qty
Screwdrivers		1
8 mm Socket		1
10 mm Socket		1
Wrench		2
Allen Keys		2

Line 1	Line 2	Qty



## Submitting order:



- Submit pictures and completed Tool Tray Log to your PEI rep
- Images need to be submitted as full-size attachments, minimum 1MB
- Plasteel can provide a secure link to upload photos to upon request

Contact us: 480-491-8100

info@plasteelaz.com

# Thank You for Purchasing Your Shadowpad

Submit Tool Tray Log and Photos via E-mail

[www.gotfod.com](http://www.gotfod.com) [FOD@plasteelaz.com](mailto:FOD@plasteelaz.com) 480-491-8100



**PLASTEEL**  
A PLASTIC ENGINEERING COMPANY